

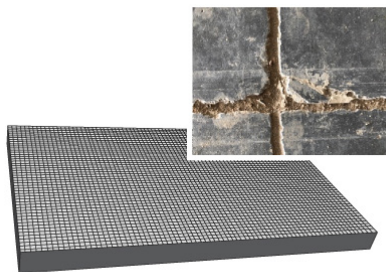
# THE FLOOR THAT INCREASES PROJECT ROI

Using quality materials and proven infrastructure from the outset can pay long-term dividends by improving ROI and reducing total cost of ownership. PrīmX's unique jointless steel fiber composition is designed to eliminate the weak points that produce most maintenance issues found in traditional concrete flooring—promoting higher performance, driving long-term maintenance savings and improving design flexibility.

## What makes PrīmX flooring more durable than traditional concrete?

PrīmX's industrial flooring removes all saw cuts and keeps construction joints tight to drastically reduce vulnerabilities in your flooring. The result? No shrinking, spalling, or curling, which means less maintenance and better performance over the life of the floor.

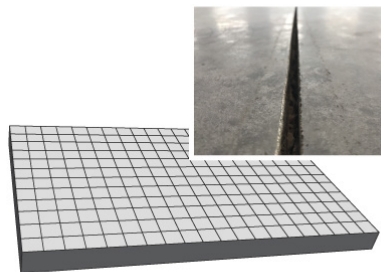
### Traditional Concrete



**96,000 Lineal Feet  
(18 Miles)\***

of Saw Cuts &  
Construction Joints  
to maintain

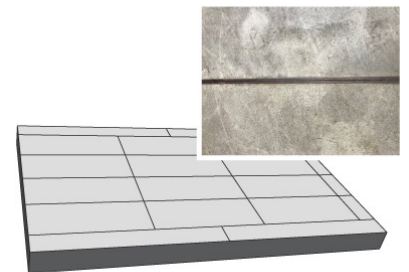
### Extended Joint



**24,500 Lineal Feet  
(4.6 Miles)\***

of Dominant Joints  
(3/8" joints)

### PrīmX Jointless



**3,500 Lineal Feet  
(.6 Miles)\***

of Tight  
Construction Joints

\*Based on an actual Distribution Center with 615,780 sf

# A STRONG FOUNDATION NOW—PAYS OFF LATER



## Cost of Construction & Ownership Savings

---

- Cost competitive with traditional concrete designs
- Decrease joint maintenance costs over the life of the floor
- Maintains superior flatness over time compared to traditional concrete with no deformation or curling
- Transferrable 5-year warranty protects tenants from unexpected repairs
- Minimizes facility downtime and vehicle damage caused by floor disrepair



## Meet critical project objectives

---

- Meet project budgets
- Improve schedule over other specialty slabs
- Reduce risk by using a proven technology with over 160 million square feet in service globally, installed by world-class contractors



## Increased racking, layout and design flexibility

---

- Rebar-free flooring means facilities can be designed—and redesigned—for aisles and racks as needed; no need to worry about bolts hitting rebar or aisle placements
- Steel fiber flooring doesn't interfere with automated and robotic technology usage—supporting a wide, and growing, variety of tenant needs
- No concern about aisle placement. No curling means the entire floor is flat.



## Improved worker safety

---

- Eliminates hazardous silica dust produced by joint sawing
- Minimizes risk of injury caused by concrete floor in disrepair
- More facility efficiency



## READY TO SEE PRĪMX ADVANTAGE FOR YOURSELF?

Visit <https://primxna.com/developer-roi> or email us at [contact@primxna.com](mailto:contact@primxna.com) to learn more about the unmatched benefits of using PrīmX flooring for your next development project.

